

## ACME AND LOCKSTROKE SYSTEMS

### ACME THREAD STRUT

The Acme Thread Strut consists of five sizes of extendable struts. Each Strut consists of a 3 in (7.5 cm) aluminum alloy tube with a solid 2-1/2 in (6.35 cm) aluminum alloy moveable Acme threaded shaft. The four largest sizes can be extended manually or activated by air, carbon dioxide or nitrogen. The Acme Thread Strut allows soft placement at collapse incidents and can be safely secured under the area to be supported with minimal shock to the load.

### LOCKSTROKE STRUT

The LockStroke Rescue Strut consists of four sizes of extendable struts. Each Strut consists of a 3 in (7.5 cm) aluminum alloy tube with a solid 2-1/2 in (6.35 cm) aluminum alloy moveable grooved shaft, and can be extended manually or activated by air, carbon dioxide, or nitrogen. The LockStroke Rescue Strut locks automatically in an extended position and does not require hand inserted locking pins. This LockStroke Rescue Strut can be extended and locked from a remote location without endangering rescue personnel.

#### ACME THREAD STRUT



22-796204 55.5-87.3 in (142.2-221.0 cm)



22-796202 36.6-58.3 in (94.0-148.6 cm)



22-796200 24.8-35.4 in (63.5-91.4 cm)



22-796206 18.8-24.5 in (47.8-62.2 cm)



22-796212 12.0-15.0 in (30.5-38.1 cm) (manual activation only)

#### LOCKSTROKE STRUT



22-796004 54.75-90.25 in (138.4-226.1 cm)



22-796002 36.2-57.5 in (92.7-146.1 cm)



22-796000 24.4-36.6 in (62.2-92.7 cm)



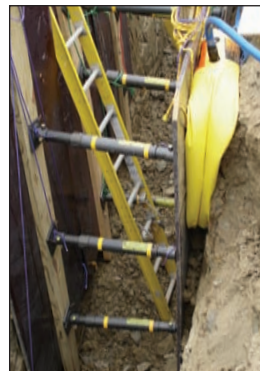
22-796006 18.8-25.2 in (48.3-62.2 cm)



*Tripod Conversion Kit*



*Vehicle Stabilization*



*Trench Applications*



*Danish Multi-Brace*

### Paratech Incorporated

P.O. Box 1000, Frankfort, IL 60423 USA  
 Customer Service: 800.435.9358  
 Phone: 815.469.3911 Fax: 815.469.7748  
 www.paratech.us E-mail: paratech@paratech.us

### Paratech Europe, Branch of Paratech Inc.

P.O. Box 174, 5260 Odense S, Denmark  
 Phone: +45.66.11.24.22 Fax: +45.66.11.24.32  
 Customer Service: 800.435.9358  
 www.paratech.us Email: paratech@paratech.dk

